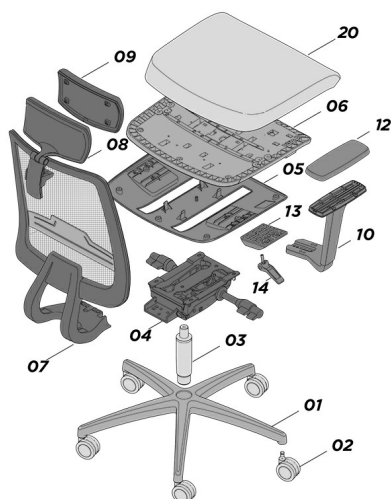


ABSOLUTE kit 231/CPM

K231ABSOLUT/CPM

Assembled mesh back task chair, Kodi aluminium base, Lynx mechanism, Uber sliding seat, Zodiac adjustable arms with aluminium bracket and side adjustment, headrest



	CODE	DESCRIPTION	QUANTITY USED
1	BAM10101AL	KODI base, Ø 700mm, aluminium	x 1
2	RUP0191NR	Free castor Ø 65mm, pin Ø 11mm, black	x 5
3	ALM41901FC	Tapered gas lift 50x28x210mm, class IV, run 125mm, chromed	x 1
4	SYM05413C	LYNX synchronized mechanism with tension control	x 1
5	SSP397ANR	UBER sliding seat outer, 10° armrests inclination, black	x 1
6	SDZ192X86AHP	UBER reinforced sliding seat for SSP397, run 60-72mm, 14 t-nuts	x 1
7	SEK548RNRNR	ABSOLUTE assembled backrest with black mesh and lumbar support, black plastic	x 1
8	ACY213NRAR	ABSOLUTE headrest for mesh task chair, assembled, black nylon	x 1
9	ACI067BC	Headrest foam to be upholstered, with insert, - 60-65 kg/m3	x 1
10	BRY212CAHDNR	ZODIAC adjustable arm with aluminium 10° bracket, right 2D, run 80mm, slide pad 58mm, black	x 1
11	BRY212CAHSNR	ZODIAC adjustable arm with aluminium 10° bracket, left 2D, run 80mm, slide pad 58mm, black	x 1
12	ACU185NR	ZODIAC polyurethane pad, black	x 2
13	ACY181NR	Armrest width adjustment system	x 2
14	CFP009ANR	Screws+lever+slid kit for armrest width adjustment system	x 2
15	VTM0516BPCFB	Hilo screw tip Ø10.5 truss head 5x16mm, bronzed	x 8
16	VTM0518BPBFB	Screw hex recess truss head M5x18mm, bronzed	x 2
17	VTM0620BPCFB	Screw wide combo truss head M6x20mm, bronzed	x 4
18	VTM0630BPCFB	Screw wide combo truss head M6x30mm, bronzed	x 6
19	VTM0820BPBFB	Screw hex recess truss head M8x20mm, bronzed	x 3
20	* SDI192A	UBER seat foam	x 1

* : optional kit components